



## WHERE RECYCLING GOES & HOW IT WORKS

### PAPER



Paper from your school is placed into 1 large recycling container from all the small bins

### BOTTLES



Glass bottles are collected and can be placed in the same recycling bin as the paper

### ALUMINUM CANS



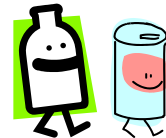
Aluminum cans from soda or juice can be recycled too



All of the paper, glass and cans are taken to a recycling center where everything is separated



The paper is cleaned with warm water to remove all staples, ink and glue. The clean paper is put into a big container of water creating slurry



The glass, cans are cleaned and sorted by color



New recycled materials are added to the slurry to make newspaper, cardboard and new paper



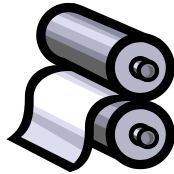
The glass is crushed and melted and can be made into new bottles, jars and glass



## WHERE RECYCLING GOES & HOW IT WORKS



Cans are crushed and melted to remove any colors, inks or labels



Using big rollers, slurry is spread into really big but really thin sheets of paper



The glass is now ready to be sent to stores and bought by your friends, teachers and family



The new aluminum is turned into big blocks that can be made into millions of drink cans



Once the paper dries, its' cut and sent out ready to be used



The big aluminum blocks are flattened and turned into new soda and juice cans, and metal packaging

## SO WHO SHOULD RECYCLE???



**EVERYONE!!!**



[www.kmghauling.com](http://www.kmghauling.com)

703.961.1100 office

Located in Sterling, VA